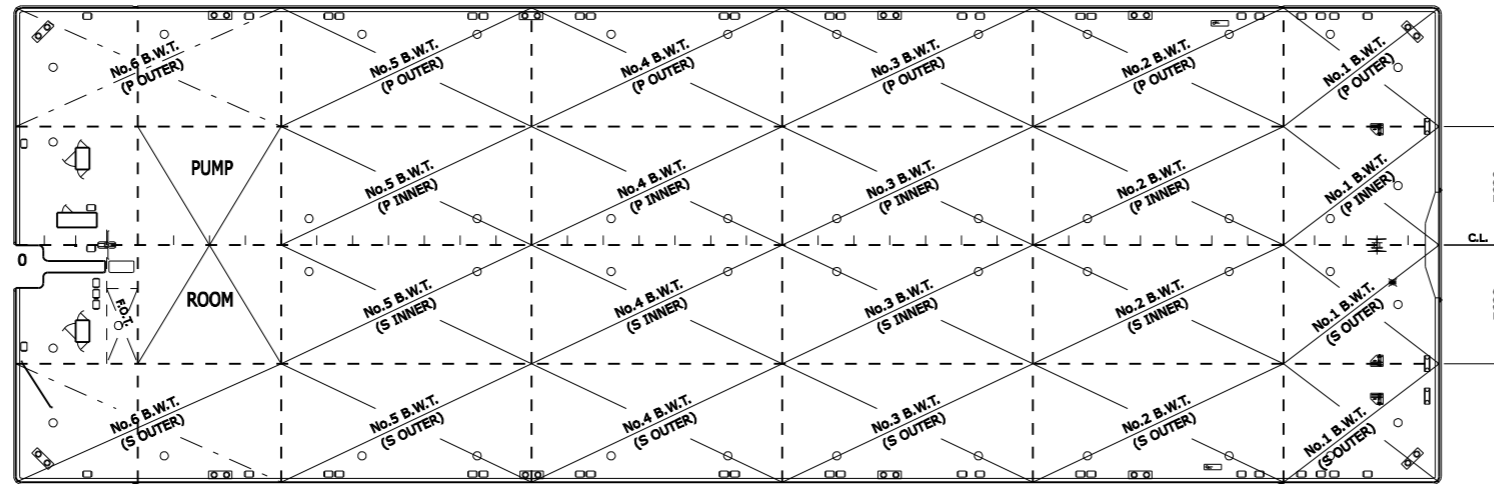
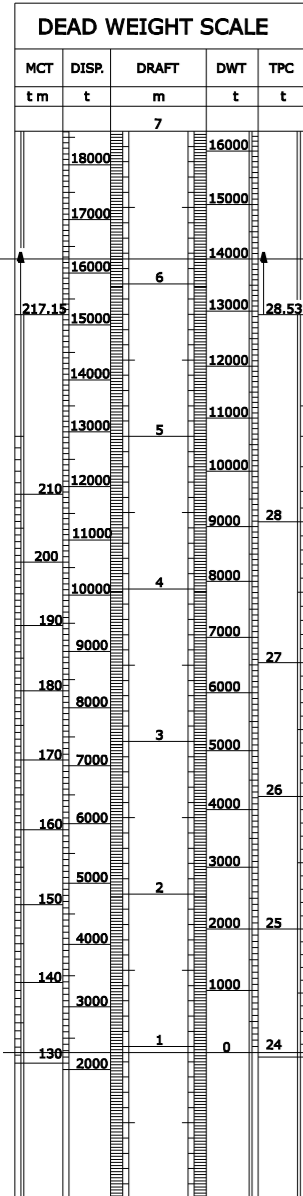
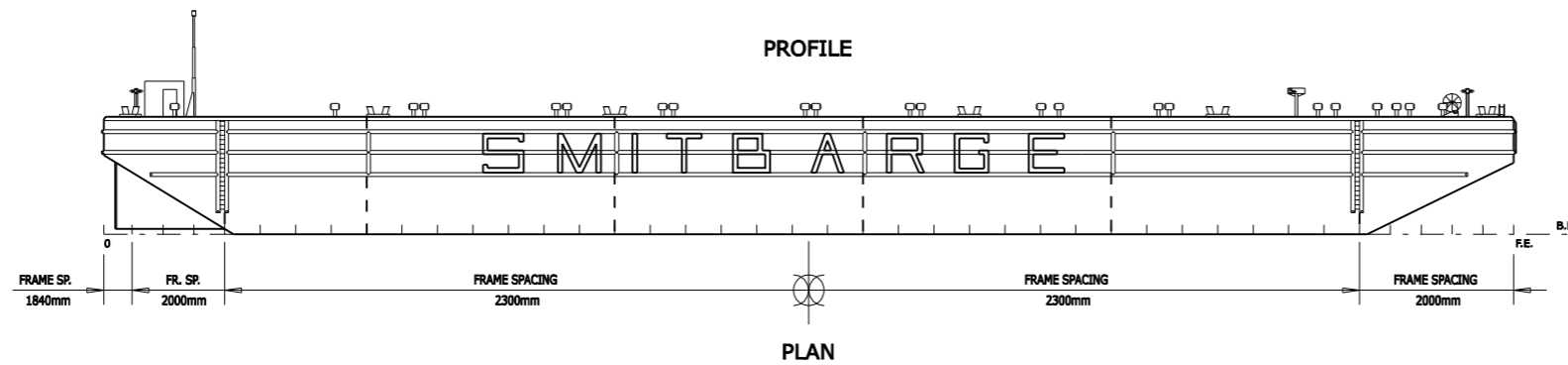


SMITBARGE 1 SMITBARGE 2

91.44m DECK CARGO BARGE

CAPACITY PLAN



BALLAST WATER TANKS				$\rho = 1.025$			
COMPARTMENT	EXTENT		CAPACITY (m ³)	WEIGHT (t)	G(m)	KG (m)	
	SMITBARGE 1	SMITBARGE 2					
No.1 B.W.T.	P INNER	FR.72 - F.E.	406	416	-39.98	4.73	
	S INNER	FR.72 - F.E.	406	416	-39.98	4.73	
	P OUTER	FR.72 - F.E.	406	416	-39.98	4.73	
	S OUTER	FR.72 - F.E.	406	416	-39.98	4.73	
No.2 B.W.T.	P INNER	FR.58 - FR.72	918	941	-27.67	3.81	
	S INNER	FR.58 - FR.72	918	941	-27.67	3.81	
	P OUTER	FR.58 - FR.72	918	941	-27.67	3.81	
	S OUTER	FR.58 - FR.72	918	941	-27.67	3.81	
No.3 B.W.T.	P INNER	FR.44 - FR.58	918	941	-11.57	3.81	
	S INNER	FR.44 - FR.58	918	941	-11.57	3.81	
	P OUTER	FR.44 - FR.58	918	941	-11.57	3.81	
	S OUTER	FR.44 - FR.58	918	941	-11.57	3.81	
No.4 B.W.T.	P INNER	FR.30 - FR.44	918	941	4.53	3.81	
	S INNER	FR.30 - FR.44	918	941	4.53	3.81	
	P OUTER	FR.30 - FR.44	918	941	4.53	3.81	
	S OUTER	FR.30 - FR.44	918	941	4.53	3.81	
No.5 B.W.T.	P INNER	FR.16 - FR.30	918	941	20.63	3.81	
	S INNER	FR.16 - FR.30	918	941	20.63	3.81	
	P OUTER	FR.16 - FR.30	918	941	20.63	3.81	
	S OUTER	FR.16 - FR.30	918	941	20.63	3.81	
No.6 B.W.T.	P OUTER	FR.0 - FR.16	810	830	36.06	4.23	
	S OUTER	FR.0 - FR.16	810	830	36.06	4.23	
	P OUTER	FR.0 - FR.16	810	830	36.06	4.23	
	S OUTER	FR.0 - FR.16	810	830	36.06	4.23	

CAPACITY TABLE						$\rho = 0.85$			
COMPARTMENT	EXTENT		CAPACITY (m ³)	WEIGHT (t)	G(m)	KG (m)			
	SMITBARGE 1	SMITBARGE 2							
F.O.T.	S	FR.6 - FR.8	26	22	38.88	4.85			

MAXIMUM PERMISSIBLE UNIFORM LOADINGS	
POSITION	LOAD
ON MAINDECK	15 t/m
CROSSING POINTS OF BULKHEADS	435 ton
CROSSING POINTS OF BULKHEADS AND TRANSVERSES	260 ton
BULKHEADS AND TRANSVERSES	160 ton

NOTE: ~
 G FORWARD(-), AFTWARD(+)
 ALL FIGURES VALID FOR SMITBARGE 2.
 FIGURES FOR SMITBARGE 1 ARE ALMOST EQUAL,
 DIFFERENCES ARE MINOR.

GENERAL PARTICULARS			
LENGTH EXTREME	91.715 m	LENGTH MOULDED	91.440 m
BREADTH EXTREME	30.755 m	BREADTH MOULDED	30.480 m
DEPTH EXTREME	7.647 m	DEPTH MOULDED	7.620 m
SUMMER DRAFT CONDITION			
DRAFT	6.163 m		
DEADWEIGHT	13980 ton		

TONNAGES	
GROSS	5688
NET	1706

CLASSIFICATION SOCIETY
 LLOYDS REGISTER OF SHIPPING CLASS 1000 "PONTOON"
 YEAR BUILT : SMITBARGE 1 - 1986
 : SMITBARGE 2 - 1985

SMITBARGE 1.5x VERSCHAALD

C	31-AUG-00	PVe	FOR USE	GVe	HHo	TBo		
A	31-AUG-00	PVe	FOR INTERNAL REVIEW	GVe	HHo	TBo		
Rev	Date	Drawn	Description	Chkd	E.Appr	P.Appr	Client	Date
Subject CAPACITY PLAN								
Project SMITBARGE 1 AND 2								
Client SMIT TRANSPORT AND HEAVY LIFT BV								
SMIT ENGINEERING BV P.O.Box 1042, 3000 BA Rotterdam				CAD-dwg not to be changed manually Orig. Size A3				
Scale NTS		Drawing No SMITBARGE-1-2			Sheet 1 of 1		Rev C	