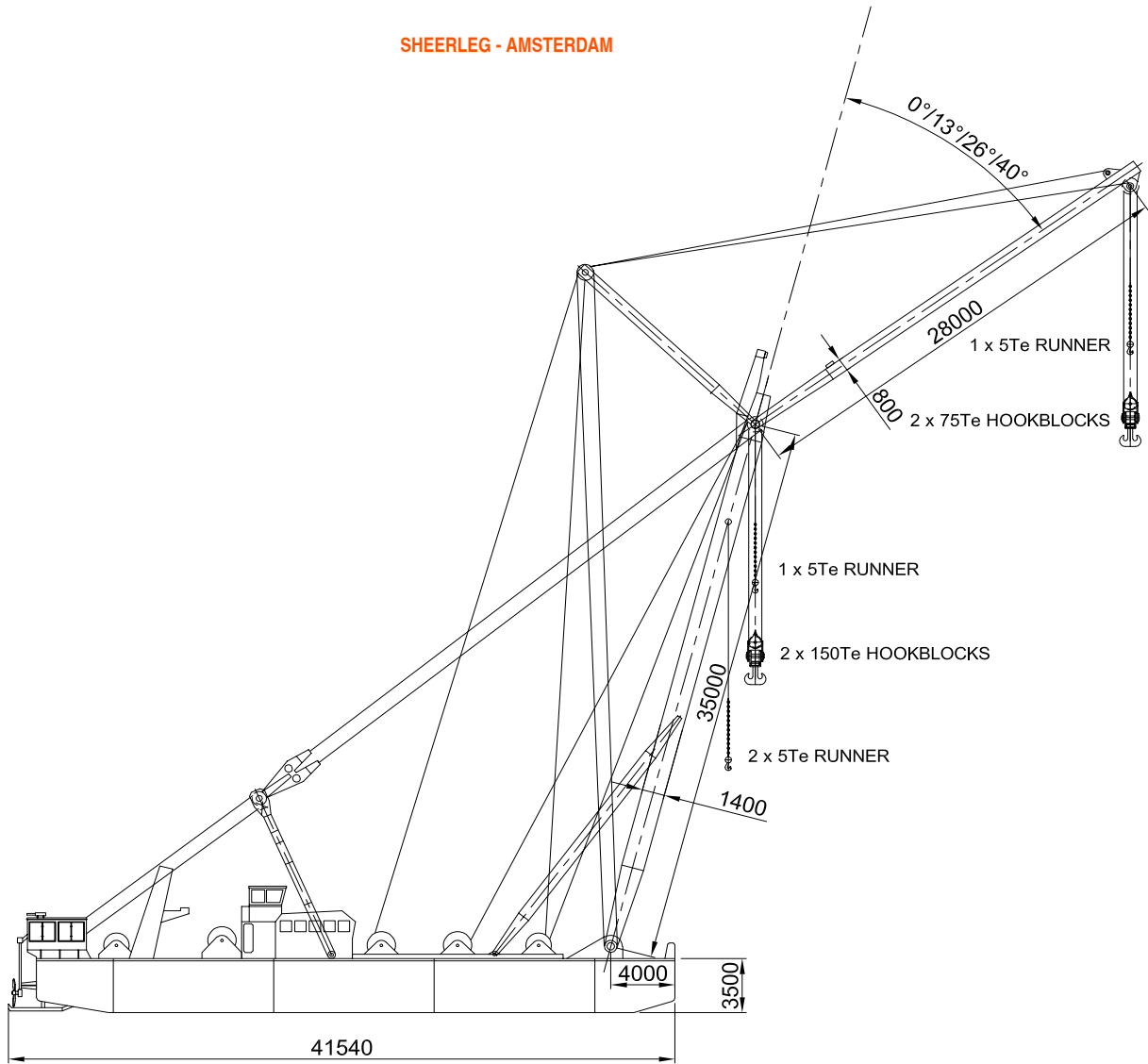


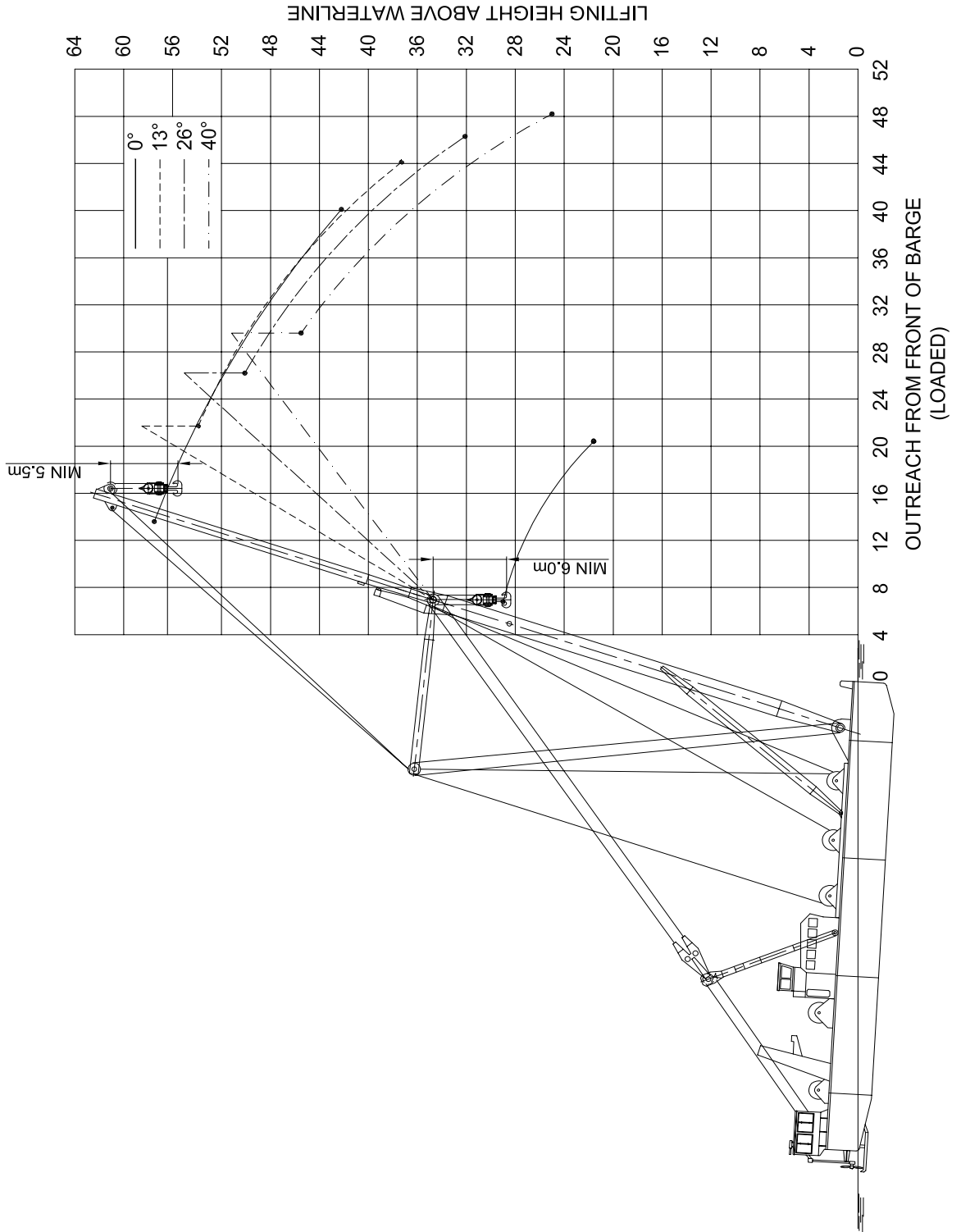
SHEERLEG - AMSTERDAM



Seagoing floating sheerleg	
Specifications	"Amsterdam"
Length	41540
Breadth working (incl. side pontoons)	17850
Breadth sailing (excl. side pontoons)	11500
Min. draught	1170
Max. draught (ballast tanks filled + max. load)	3500
Airdraught sheerlegs and flyjib laid down forward on pontoon	6000
Airdraught sheerlegs laid down backwards (seapassage)	17000
Gross tonnage	759.1
Max. capacity	300
● Propulsion: 2 schottelnavigators of 275pk each	

Dimensions in millimeters. Weight in metric tonnes.

SHEERLEG - AMSTERDAM



Dimensions in millimeters. Weight in metric tonnes.

SHEERLEG - AMSTERDAM

Mainboom					
Max. load	Outreach (jib installed)	Lifting height (jib installed)	Draught bow (jib installed)	Draught stern (jib installed)	Outreach (no jib installed)
300	6.8	29	3.08	0.86	5 - 10
295	7.15	28.85	3.03	0.89	11
290	7.4	28.7	2.99	0.91	12
285	7.8	28.55	2.97	0.93	12.5
280	8.15	28.4	2.93	0.95	13
275	8.6	28.3	2.9	0.97	13.5
270	9.05	28.15	2.85	0.99	14
265	9.5	28.05	2.63	1.01	14.5
260	10.05	27.9	2.8	1.03	15
255	10.5	27.75	2.76	1.05	15.3
250	10.95	27.6	2.73	1.07	15.6
245	11.4	27.4	2.69	1.09	16
240	11.85	27.2	2.66	1.1	16.2
235	12.3	27	2.64	1.12	16.4
230	12.75	26.8	2.61	1.13	16.7
225	13.2	26.6	2.58	1.15	17
220	13.75	26.4	2.55	1.16	17.2
215	14.3	26.2	2.51	1.18	17.4
210	14.6	26	2.49	1.2	17.7
205	15.1	25.7	2.47	1.2	18
200	15.55	25.4	2.45	1.2	18.2
195	15.9	25.1	2.43	1.21	18.4
190	16.3	24.9	2.41	1.21	18.7
185	16.7	24.7	2.4	1.21	19
180	17.05	24.4	2.37	1.22	19.2
175	17.35	24.2	2.37	1.22	19.4
170	17.65	24	2.35	1.22	19.7
165	17.95	23.7	2.33	1.23	20
160	18.15	23.5	2.32	1.23	
155	18.45	23.3	2.31	1.23	
150	18.65	23.1	2.28	1.23	
145	18.9	23	2.27	1.24	
140	19.05	22.8	2.25	1.24	
135	19.25	22.6	2.24	1.24	
130	19.4	22.5	2.22	1.24	
125	19.6	22.3	2.2	1.24	
120	19.8	22.2	2.19	1.24	
115	19.9	22	2.17	1.24	
110	20.05	21.9	2.16	1.24	
105	20.2	21.8	2.14	1.25	
100	20.3	21.7	2.13	1.25	
95	20.4	21.6	2.12	1.25	

Dimensions in millimeters. Weight in metric tonnes.